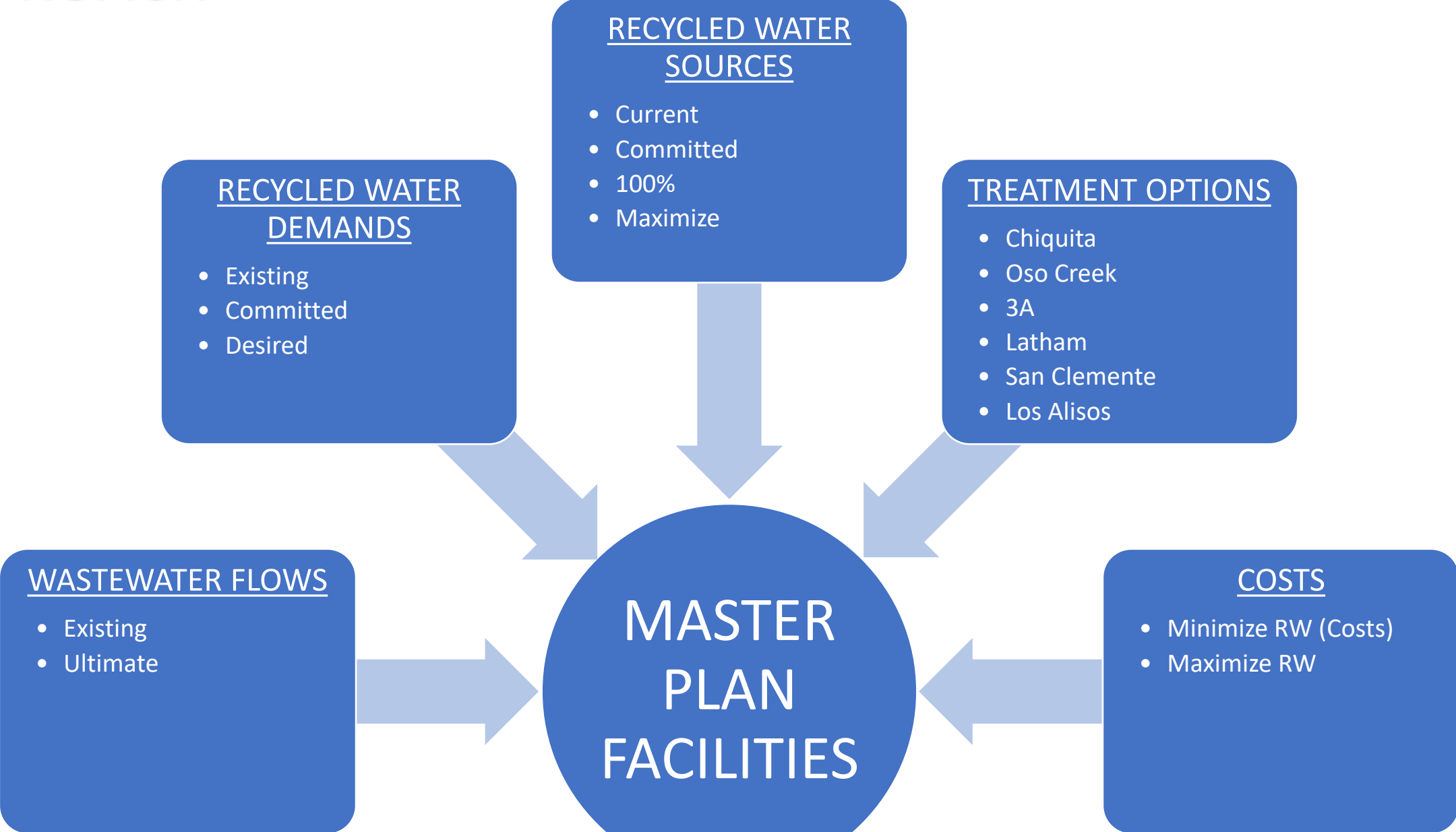


Santa Margarita Water District

Wastewater Master Plan

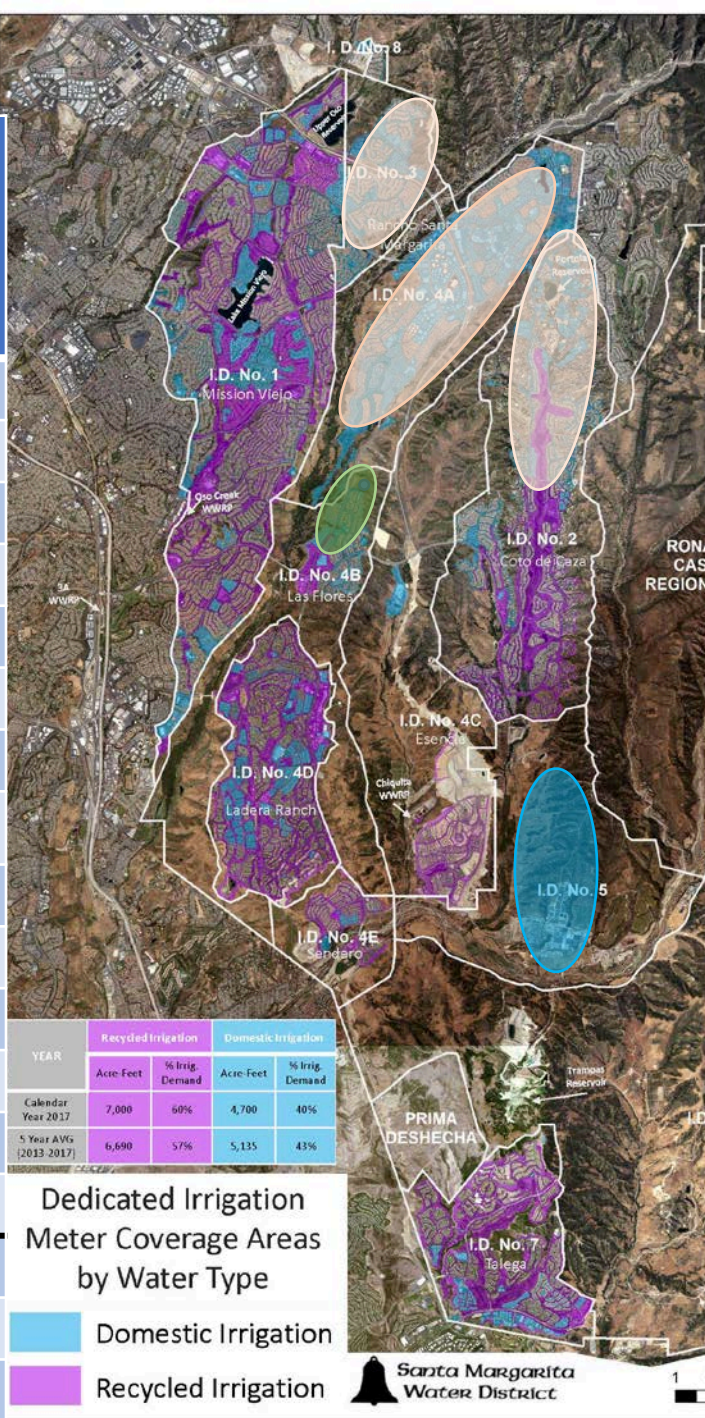
SOCWA Board Mtg
February 4, 2021

APPROACH



Desired Recycled Water Demands (2019)

ID	Area	Current Recycled Water Demand (AFY)	Committed Additional Future Recycled Water Demand (AFY)	Desired Additional Future Recycled Water Demand (AFY)
1	Mission Viejo	2,766	-	134
2	Coto de Caza	1,040	-	210
3	RSM-Melinda	0	-	150
4A	City of RSM	0	-	1,000
4B	Las Flores	103	197	-
4C & E	Sendero/Esencia	561	279	-
4D	Ladera Ranch	1,513	-	387
7	Talega	1,013	-	87
8	Hidden Ridge	0	-	20
1	Lakefill	250	-	40
4E & 5	Lapeyre	5	4,645	-
4C & E	Construction	141	-	-
	Other Agency	213	487	-
	District Use	100	-	-
Total		7,705	5,608	2,028
Total Future Committed Flow			13,313	
Total Future Desired Flow				15,341



100% WW Recycled & Max Sources of Recycled Water (2019)

Current Demand ~ 7,705 AFY

Committed Demand ~ 13,313 AFY

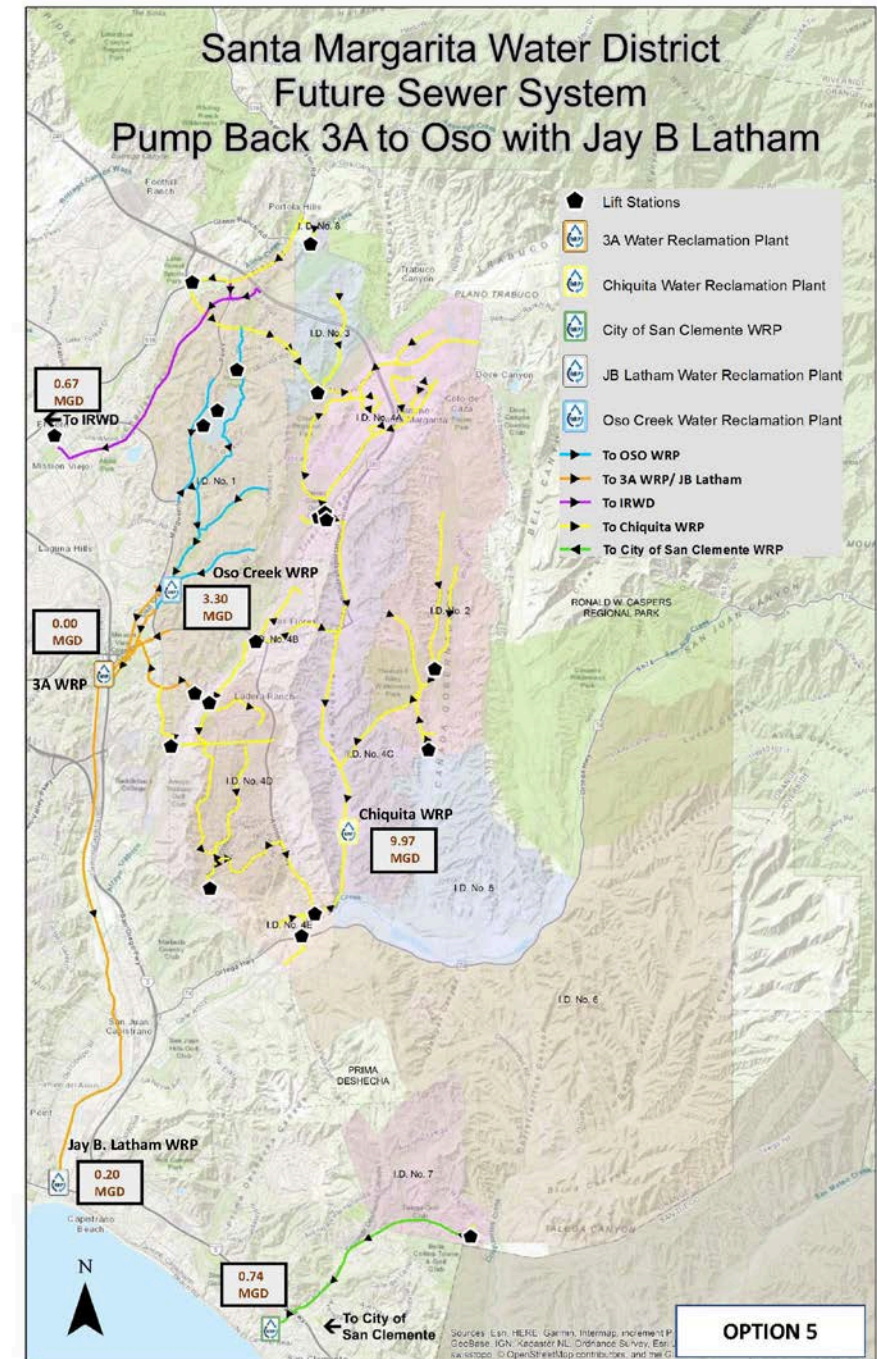
Desired Demand ~ 15,341 AFY

Facility	Total Tertiary Treatment Capacity (MGD)	SMWD Tertiary Treatment Capacity (MGD)	Current SMWD Source Average		Committed Future Tertiary Capacity		100% Wastewater Recycled Tertiary Water		Maximized Recycled Water
			(MGD)	(AFY)	(MGD)	(AFY)	(MGD)	(AFY)	(AFY)
WRP									
Oso Creek WRP	3.00	3.00	1.54	1,728			3.3	3,697	3,697
3A WRP	2.40	0.00	0.00	-					
Latham	0.00	0.00	0.00	0					
					1.54	1,724	3.30	3,697	3,697
Los Alisos WRP	N.A.	N.A.	N.A.	N.A.	0	0	0	0	0
Chiquita WRP	6.00	6.00	3.94	4,409	8.97	10,053	8.97	10,053	10,053
City of San Clemente	4.40	0.00	0.60	676	0.60	676	0.60	676	2,676
							9.58	10,728	12,728
WRP Total	15.80	9.00	6.08	6,813	11.12	12,452	12.88	14,425	16,425
Urban Return									
Arroyo Trabuco	-	-	-	307		307		307	307
Oso Barrier	-	-	-	841		841		841	841
Gobernadora	-	-	-	199		199		199	199
Horno	-	-	-	155		155		155	155
Tick	-	-	-	119		119		119	119
Urban Return Total	-	-	-	1,621		1,621		1,621	1,621
RMVMWC⁽¹⁾	-	-	-	788		2,500		0	0
Total Recycled Water Supply				9,222		16,573		16,046	18,046

(1) Use RMVMWC water for potable water supply

Ultimate Goal – Nominally Recycle 100% of Wastewater Generated

- Effective 100% recycled water production
- Expand Oso Creek WRP
- Produces 15,878 AFY of recycled water
 - Supplies full “Desired” Recycled Water Demands ~ 15,340
- Allows for use of RMVMWC for potable water

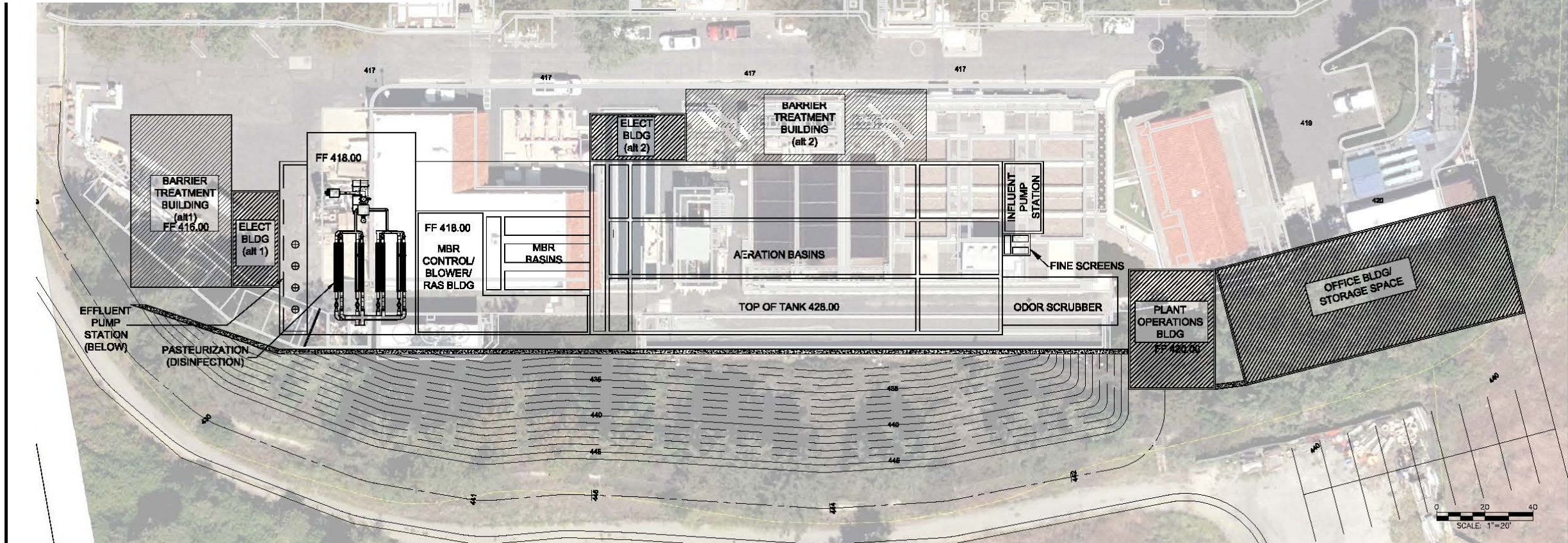


Proposed Reconfiguration of Oso Creek WRP

Flows

Current ~ 1.8 mgd

Ultimate ~ 3.4 mgd



Ultimate Chiquita WRP Plant Layout

Flows

Current ~ 5.68 mgd

Ultimate ~ 9.97 mgd



City of San Juan Capistrano - Wastewater

- No Impact on Latham Flows
- Future Projects
 - Collection System Rehab/Replacement
 - Manhole Rehab/Replacement
- Anticipate Annexation Complete - FY '21/22

